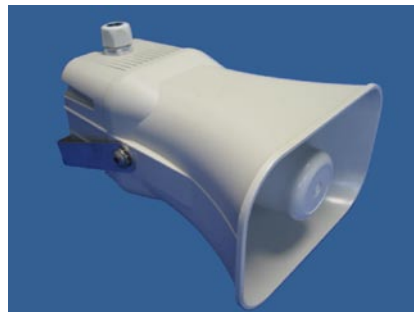


Horn loudspeaker



TR-XX-G

The versions TR-XX are suitable for speech and music transmission and can be used both for indoor and outdoor applications. They are housed in grey plastic enclosures (ABS self-extinguishing) with swivel-bend brackets. Delivery includes sound output transformer, 1 m cable, mounting material and compatible high-pass filter. Pole mountings available on demand.



TR-15-T / TR-30-T

The TR-30-T was specially developed for public address systems in road tunnels and parking garages with poor ventilation. It is housed in a grey plastic enclosure (ABS self-extinguishing) with a multi-position swivel bracket made of stainless steel type V4A 1.4571, resistance category III. The M20 cable screw connection provides protection against high water penetration. An additional hole in the pressure chamber allows the water to drain off after tunnel cleaning procedures. This horn is also equipped with a compatible high-pass filter.

Resistance to:

- Emissions of gasoline and diesel engines
- Road salts such as sodium chloride (NaCl) and calcium chloride (CaCl₂)
- Corrosion in conjunction with concrete (alkaline water)
- Traffic dust pollution
- Traffic vibrations

Typ	TR-10-G	TR-15-G	TR-20-G	TR-25-G	TR-30-G	TR-15-T
load rating	10W / 100V	15W / 100V	20W / 100V	25W / 100V	30W / 100V	15W / 100V
Impedance	1000 Ω	667 Ω	500 Ω	400 Ω	333 Ω	667 Ω
Transformer matching	10 / 5 / 2,5	15 / 7,5 / 3,75	20 / 10 / 5	25 / 12,5 / 6,25	30 / 15 / 7,5	15 / 7,5 / 3,75
Sound pressure level (1W/1m)	110dB	110dB	110dB	110dB	110dB	110dB
max. Sound pressure level (1m)	119dB	120dB	121dB	122dB	123dB	120dB
Frequency range (-10dB)	350-10000 Hz	350-10000 Hz	350-10000 Hz	350-10000 Hz	350-10000 Hz	350-10000 Hz
Transmission angle	110° / 55°	110° / 55°	110° / 55°	110° / 55°	110° / 55°	110° / 55°
Dimensions (mm)	180x120x230	180x120x230	180x120x230	180x120x230	180x120x230	180x120x230
	-40 - +90° / IP54	-40 - +90° / IP54	-40 - +90° / IP54	-40 - +90° / IP54	-40 - +90° / IP54	-40 - +90° / IP66
weight	1,8 kg	2,0 kg	2,1 kg	2,2 kg	2,3 kg	2,2 kg
Color	light-grey RAL7035	light-grey RAL7035	light-grey RAL7035	light-grey RAL7035	light-grey RAL7035	light-grey RAL7035
Typ	TR-10-M20	TR-15-M20	TR-20-M20	TR-25-M20	TR-30-M20	TR-30-T
load rating	10W / 100V	15W / 100V	20W / 100V	25W / 100V	30W / 100V	30W / 100V
Impedance	1000 Ω	667 Ω	500 Ω	400 Ω	333 Ω	333 Ω
Transformer matching	10 / 5 / 2,5	15 / 7,5 / 3,75	20 / 10 / 5	25 / 12,5 / 6,25	30 / 15 / 7,5	30 / 15 / 7,5
Sound pressure level (1W/1m)	110dB	110dB	110dB	110dB	110dB	110dB
max. Sound pressure level (1m)	119dB	120dB	121dB	122dB	123dB	123dB
Frequency range (-10dB)	350-10000 Hz	350-10000 Hz	350-10000 Hz	350-10000 Hz	350-10000 Hz	350-10000 Hz
Transmission angle	110° / 55°	110° / 55°	110° / 55°	110° / 55°	110° / 55°	110° / 55°
Dimensions (mm)	180x120x230	180x120x230	180x120x230	180x120x230	180x120x230	180x120x230
	-40 - +90° / IP66	-40 - +90° / IP66	-40 - +90° / IP66	-40 - +90° / IP66	-40 - +90° / IP66	-40 - +90° / IP66
weight	1,8 kg	2,0 kg	2,1 kg	2,2 kg	2,3 kg	2,3 kg
Color	light-grey RAL7035	light-grey RAL7035	light-grey RAL7035	light-grey RAL7035	light-grey RAL7035	light-grey RAL7035