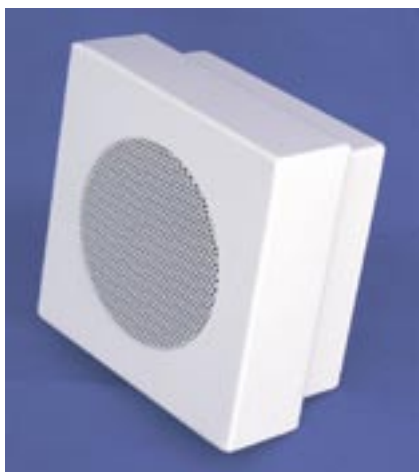


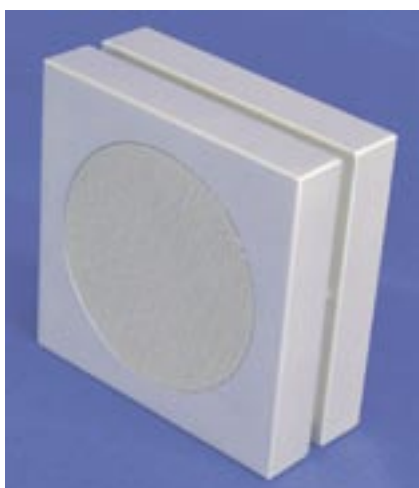
Wall metal loudspeakers



WDW-160

These two square loudspeakers for surface mounting are made of metal and appeal by their compact design. The opening at the back part or the side openings facilitate the connection. The two-pieced housing is treated with a plastic coating and heat-resistant up to 1500° Celsius. Both speakers impress by their well-balanced sound characteristics. Delivery includes fixing material.

WDW-190 can also perfectly be placed on desks or tables. Optionally available with volume controller.



WDW-190

Typ	WDW-160	WDW-160-10	WDW-190	WDW-190-10
load rating	6W / 100V	10W / 100V	6W / 100V	10W / 100V
Impedance	1667 Ω	1000 Ω	1667 Ω	1000 Ω
Transformer matching	6 / 3 / 1,5	10 / 5 / 2,5	6 / 3 / 1,5	10 / 5 / 2,5
Sound pressure level (1W/1m)	93dB	93dB	94dB	94dB
max. Sound pressure level (1m)	101dB	103dB	102dB	104dB
Frequency range (-10dB)	80-19000 Hz	80-18000 Hz	70-19000 Hz	70-19000 Hz
Transmission angle	180°	180°	180°	180°
Dimensions (mm)	160x160x85	160x160x85	193x193x85	193x193x85
	-	-	-	-
weight	1,2 kg	1,4 kg	1,4 kg	1,6 kg
Color	white RAL9010	white RAL9010	silver RAL9006	silver RAL9006