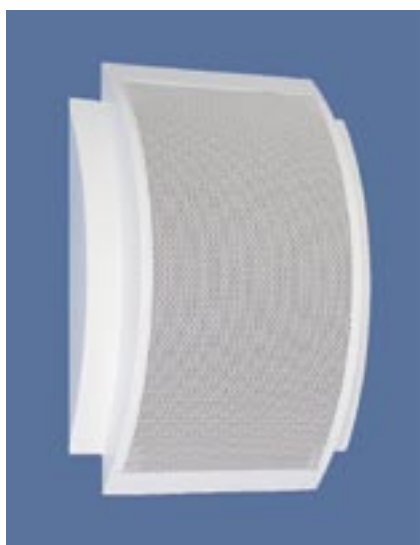


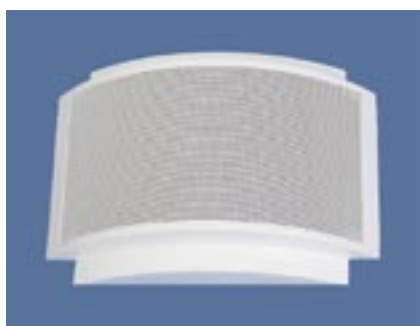
## Wall and ceiling plastic loudspeaker



WDW-330



DAR-130



Due to its ventilated housing, the WDW-330 version is most suitable for speech and music reproduction. The symmetrical design permits horizontal and vertical installation options. Delivery includes screws and wall plugs. Anti-theft protection is ensured by suitable mounting components. As an option, a volume controller can be integrated. The 15 W version is fitted up with a hi-fi chassis. DAR-130 was developed to suit ceiling loudspeaker R-150 with respect to shape and size. Screws and wall plugs are also included in delivery.

Typ	WDW-330	WDW-330-10	WDW-330-15	DAR-130	DAR-130-10
load rating	6W / 100V	10W / 100V	15W / 100V	6W / 100V	10W / 100V
Impedance	1667 Ω	1000 Ω	667 Ω	1667 Ω	1000 Ω
Transformer matching	6 / 3 / 1,5	10 / 5 / 2,5	15 / 7,5 / 3,75	6 / 3 / 1,5	10 / 5 / 2,5
Sound pressure level (1W/1m)	93dB	93dB	91dB	93dB	93dB
max. Sound pressure level (1m)	101dB	103dB	103dB	101dB	103dB
Frequency range (-10dB)	70-19000 Hz	70-19000 Hz	60-20000 Hz	80-19000 Hz	80-19000 Hz
Transmission angle	180°	180°	180°	180°	180°
Dimensions (mm)	330x240x83	330x240x83	330x240x83	Ø 168x72	Ø 168x72
	-	-	Hifi Chassis	-	-
weight	1,6 kg	1,8 kg	2,1 kg	0,8 kg	1,0 kg
Color	white RAL9010	white RAL9010	white RAL9010	white RAL9010	white RAL9010